



Computime





# Who We Are

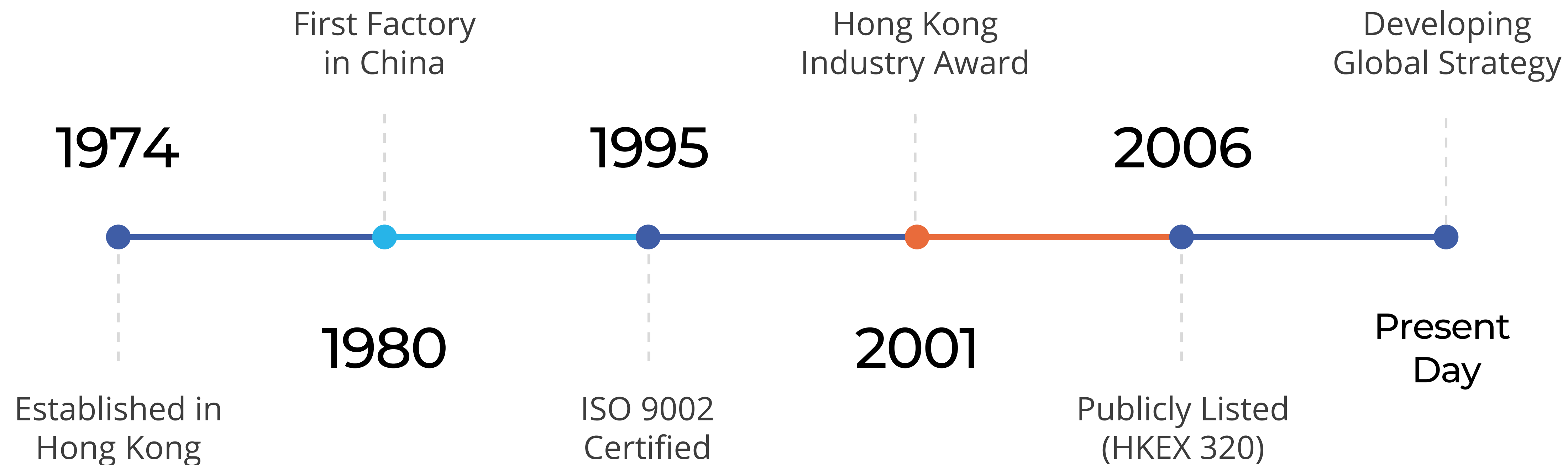
**COMPUTIME IS A TECHNOLOGY AND MANUFACTURING COMPANY THAT ENABLES AND ADVANCES SMART AND SUSTAINABLE LIVING FOR EVERYONE.**

We focus on AI and ML that promote connected homes and buildings, evolving robotic automation technologies, and innovating renewable energy and water saving technologies.

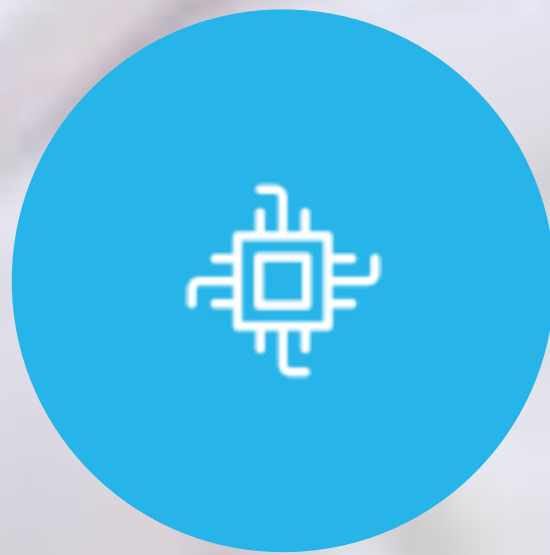




# Our History



# Why Computime



## Specialized R&D

With over 200+ engineers, Computime is a global specialist in design and engineering of smart controls.



## Global Manufacturing

We operate 5 manufacturing sites around the world with over 4,000 workers covering a wide range of manufacturing services.



## Experienced Management

Comprising of industry veterans across all areas of expertise, our leadership team is responsible for guiding our global expansion.



## World Class Quality

Our facilities are ISO9001, IATF16949, ISO13485 and ISO14000 certified. We utilize a Variation Reduction Initiative to eradicate defect and maximize first pass yield.

# Our Vision

To be a leading innovator and enabler of smart and sustainable living.

# Our Mission

To universalize smart and sustainable living through technologies, products, and manufacturing solutions.



# Our Values



## Customer Focus

Considers long-term relationships with external and internal customers



## Solution Driven

Carries out fact-finding and identifies the root causes for complex problems.



## Innovation

Thinks out-of-the-box when generating ideas and be open-minded to new ideas



## Collaboration

Breaks down silos; collaborates across teams/departments to achieve overall company goals



## Integrity

Decides and acts in accordance with ethical value and considers the community in all decisions and actions



# Our Businesses



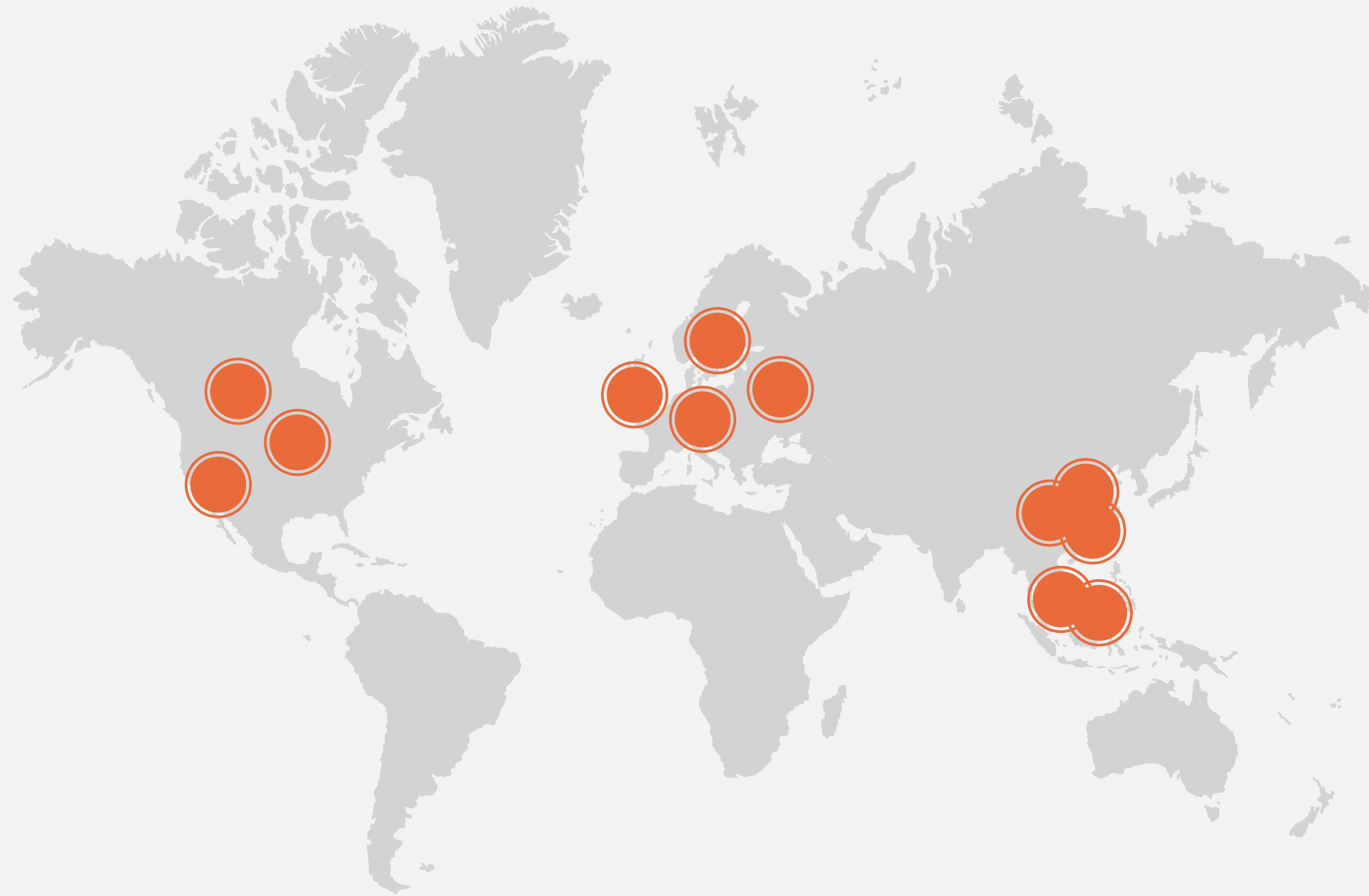
Established in 2004, SALUS Controls is a B2B technology-based company focused on smart home, branded energy efficiency and environmental control products. We also operate under the Braeburn brand in N.A.



Computime Control Solutions is a global technology and manufacturing company providing green and smart control products to customer around the world.



We aim to become a B2C global brand and product leader in the home and baby markets, providing stylish, innovative, and quality solutions directly to consumers through online and offline retail channels.



5,000

Employees Worldwide



15

Offices,  
R&D, and  
Manufacturing Sites

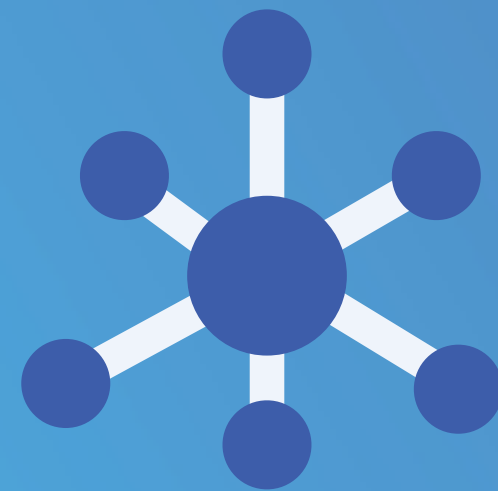
# Our Locations



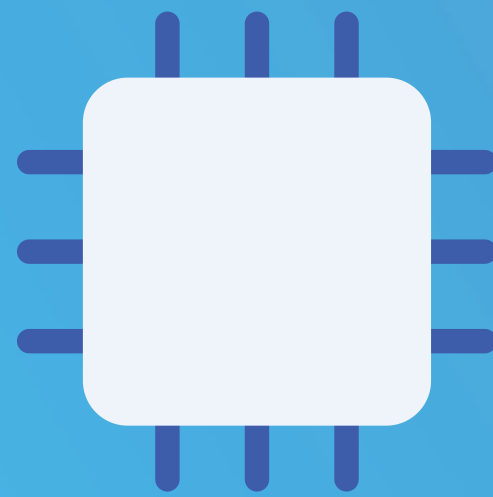
# Our Technologies



Cloud/PaaS



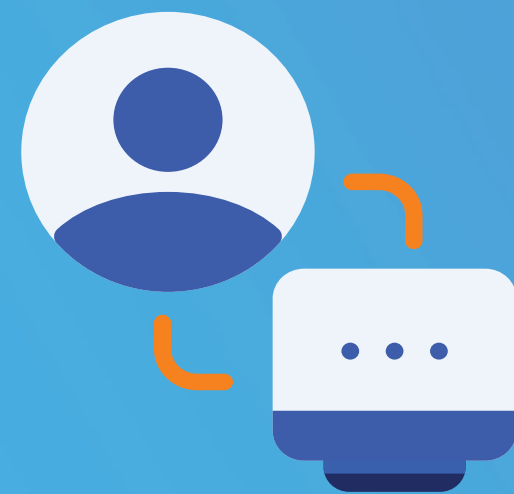
Connectivity



IoT/Sensors



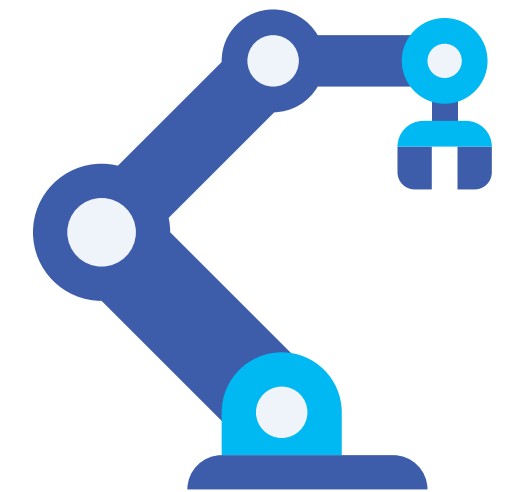
AI/ML



Human Machine  
Interface



Smart Home &  
Building



Robotics



Smart Irrigation



Energy  
Management

## Our Platforms



# CONTROL SOLUTIONS



# Focused Industries

## Bespoke Technology Solutions

We provide OEM and ODM services across various market segments, including:

- **Appliance Controls**
- **HVAC**
- **Home Controls**
- **Industrial and Medical**



Computime is a specialist in IoT technologies and wireless connectivity, in particular, low power sensors with optimized battery life.

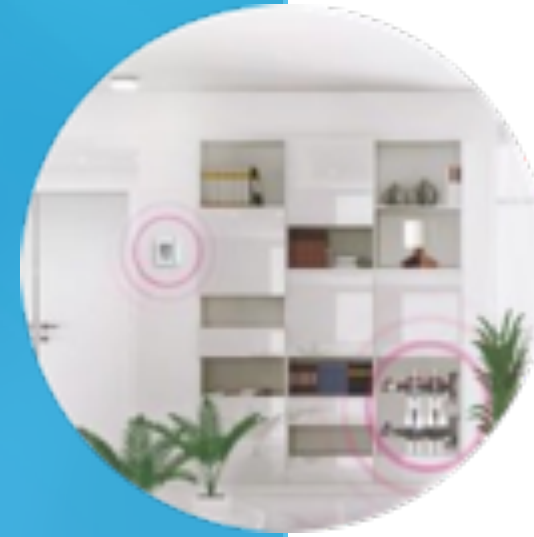




# Engineering

## Built For You.

Computime has a heritage of product engineering works that started in 1974. Every year, we bring hundreds of new products into the market through the work of our 200 strong engineering team around the world.



Provide **platforms** in HVAC, lawn & gardening, and appliance ecosystems



Deliver **solutions** based on Computime's five core technologies



Offer design **expertise** that covers all engineering disciplines in our industry



# Centers of Excellence

Center	Segment	Technology	Skill Set
Hong Kong	HVAC Cloud	Heating Platform Cloud & Mobile App	RF & Gateway Design Cloud & IoT AI/ML
China	Appliance Ignition Irrigation Consumer Cloud	Kitchen Appliance Flame Control Pump Control End-to-end Tuya	Embedded Design High Voltage Ignition Water Flow & Pump Tuya Integration
Romania	Testing Lab Appliance Field Application Engineering	Field Testing System Kitchen Appliance Design and FAE	HVAC System Appliance Design
USA	RF Field Application Engineering	RF System Design	RF Performance



# Manufacturing



## Globally Accredited

Our facilities are certified with numerous accreditations and regulatory compliances.



## Industrial Grade

Our team has extensive experience designing and manufacturing commercial and industrial grade electronics.



## Quality Assurance

Our quality is to achieve Total Customer Satisfaction through continuous improvement and prevention.



## Dedicated Teams

Comprising of industry veterans across all areas of expertise, our leadership team is responsible for guiding our global expansion.



# Manufacturing Footprint



**Shenzhen, China**



**Yunfu, China**



**Penang, Malaysia**



**HCM, Vietnam**



**Guadalajara, Mexico**



**Ploiești, Romania**



The background of the entire image is a close-up, high-angle photograph of a blue printed circuit board (PCB). The board is densely packed with various electronic components, including integrated circuits, capacitors, and resistors. The image is overlaid with a semi-transparent blue filter. A white rectangular box is positioned on the left side of the image, containing the company name in white text.

# SALUS CONTROLS



# About SALUS

- SALUS Controls is a **B2B IoT technology-based** company focus on smart home, branded energy efficiency, and environmental control products
- SALUS is a 100% subsidiary of the **Computime Group**
- Established in 2004, SALUS has operations in UK, Germany, US, Canada, Romania, France and Nordic and reaches over 27 countries
- We also operate under the Braeburn brand in North America
- We offer wired and wireless products for, **Hydronic heating System, Force Air System and Smart Home**

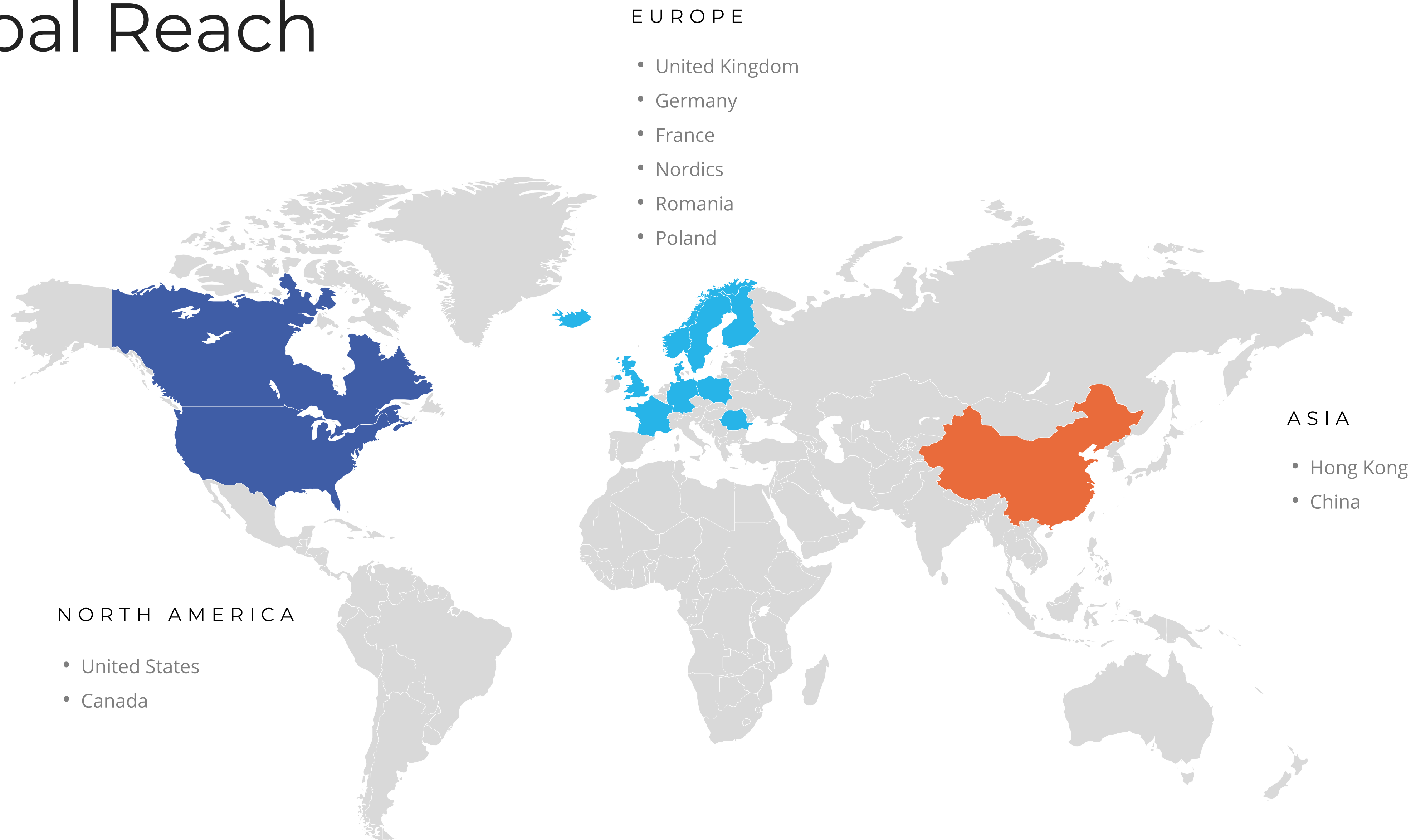


SALUS  
Smart Home

Discover the possibilities!



# Global Reach





# Our Evolution



Hard wired and RF non-connected thermostats



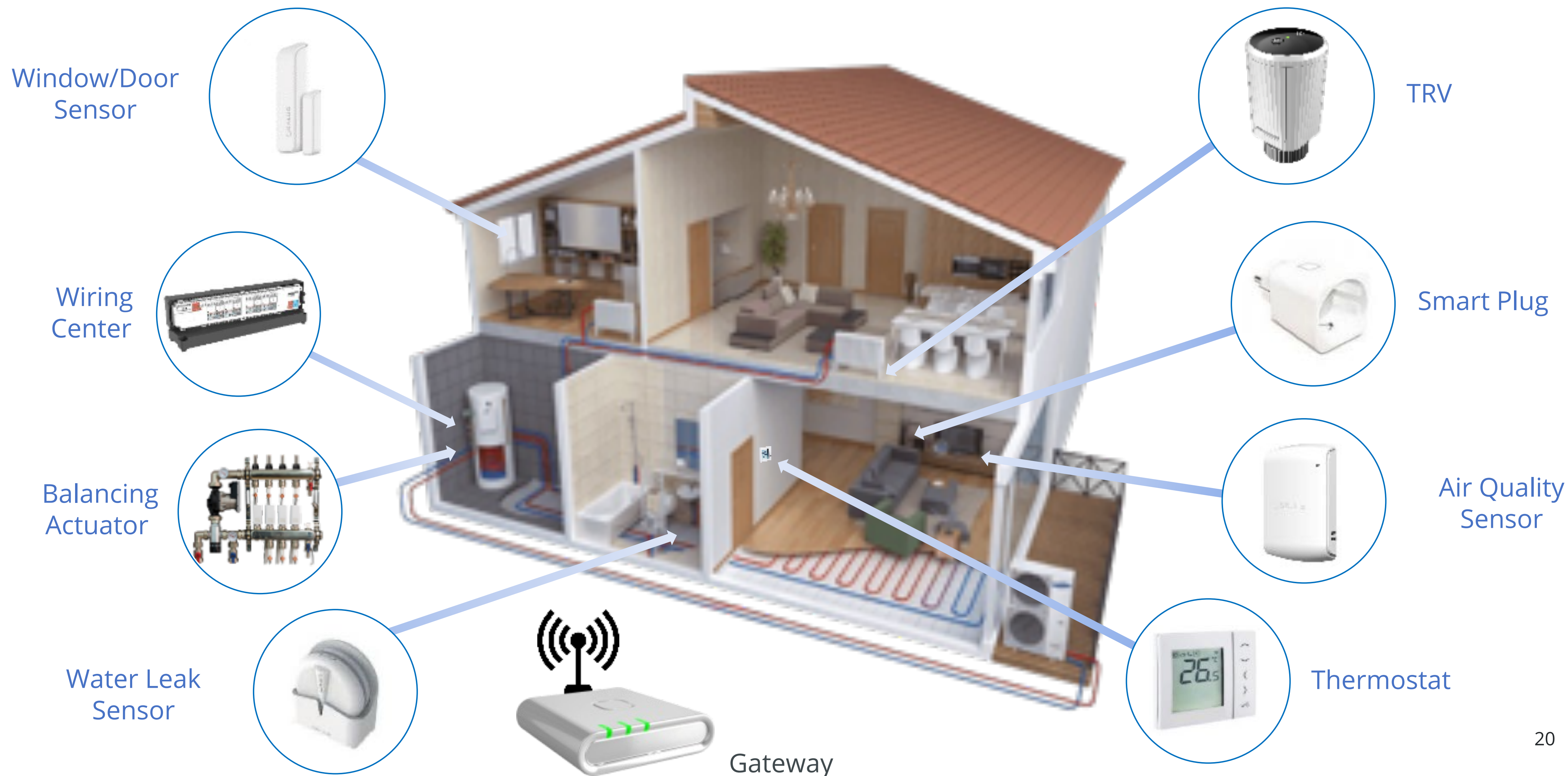
Connected thermostats



Ecosystem and Smart Home



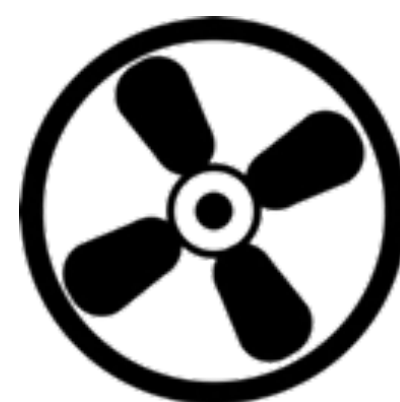
# Our Ecosystem



# Our Products



**SMART HOME  
SYSTEM**



**FORCE AIR  
SYSTEM**



**PUMP  
CONTROL**



**UNDERFLOOR  
HEATING**



**BOILER  
CONTROL**



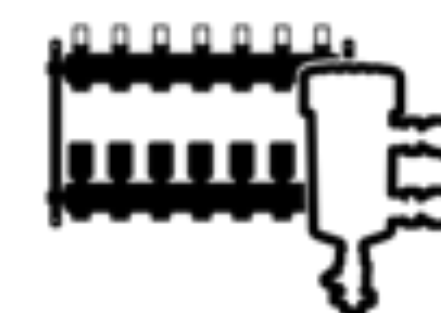
**ELECTRICAL  
HEATING**



**RADIATOR  
HEATING**



**SOLAR  
CONTROL**



**ACCESSORIES**



# COMPUTIME BRANDS



# About CT Brands

- CT Brands is a **B2C branded product** company focusing on smart home, infant care and floor care products products
- CT Brands is a 100% subsidiary of the **Computime Group**
- Established in 2018, CT Brands licensed the Black and Decker brand for multiple categories
- Our products are sold to traditional retailers as well as online channels in North America, Europe and China





# Our Model



**BRAND  
MANAGEMENT**



**SALES &  
CUSTOMER  
SUPPORT**



**MARKETING &  
CREATIVE**



**PRODUCT  
DEVELOPMENT**



**VENDOR  
MANAGEMENT**



**SHIPPING &  
LOGISTICS**



**PLANNING &  
WAREHOUSING**



**AFTER SALES  
SUPPORT**



# Our Products



## Smart Home



## Smart Nursery



## Floor Care





# THANK YOU

[www.computime.com](http://www.computime.com)